



## Company Outline

※As of April, 2018

### START-UP

January 1951

Stock Code **7743**

Share Unit Number 100 shares



(Listed on TSE first section in March, 2017)

### FOUNDED

9<sup>th</sup> October 1957

### HEADQUARTER

2-40-2 Hongo, Bunkyo-ku, Tokyo

### CAPITAL

JPY 1,841 million

### EMPLOYEES

Regular employees:867

### SUBSIDIARIES

Consolidated  
Subsidiaries

Japan: 3 Subsidiaries  
Overseas: 5 Subsidiaries  
(Shanghai, Singapore, Taiwan,  
Australia, UK)

Unconsolidated  
Subsidiaries

Japan: 1 Subsidiary  
Overseas: 3 Subsidiaries  
(Belgium, Malaysia, Germany)  
※ Vietnam: Representative office





## Strategy & History ②

Mar 2009  
Launch of "SEED 1dayPure"  
(First Japan-made 1day lens)



Dec 2011  
Launch of "SEED 1dayPure moisture"



Jun 2012  
Launch of "SEED 1dayPure Multistage"



May 2014  
Listed on TSE(Tokyo Stock Exchange) 2<sup>nd</sup> Section

Jun 2014  
Launch of "SEED 1dayPure moisture for Astigmatism"



Aug 2014 Completion of SEED Kounosu Research Institute No. 2 Building



Jun 2016 Completion of R&D Building

March 2014  
Assigned to 1<sup>st</sup> Section from 2<sup>nd</sup> Section of TSE

Sep 2017 Completion of SEED Kounosu Research Institute No. 3 Building

Oct 2017 60<sup>th</sup> Anniversary

Apr 2018 Opening of Nursery "Fukurou Forest"



Aug 2018  
Launch of "SEED 1dayPure Moisture for Flex"



Aug 2018 Launch of "Contact Lens for dogs"

International standard for production and quality control

Acquisition of **ISO13485**  
Fulfill the requirements of **CE** Mark

To complement business structure by forming alliance with Japanese Corporations

Collaboration with **TORAY**

Strengths of SEED for manufacturing lens in Japan

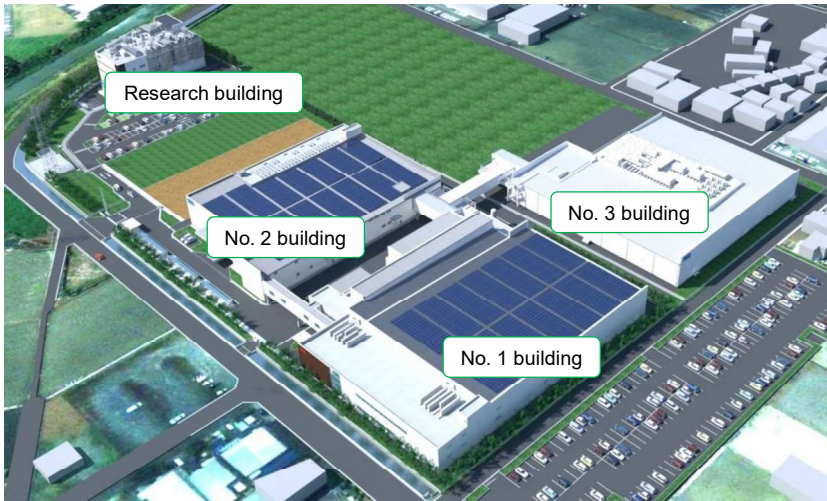
- Branding and quality of "Made In Nippon"
- Providing a wide range of products that suits users' needs



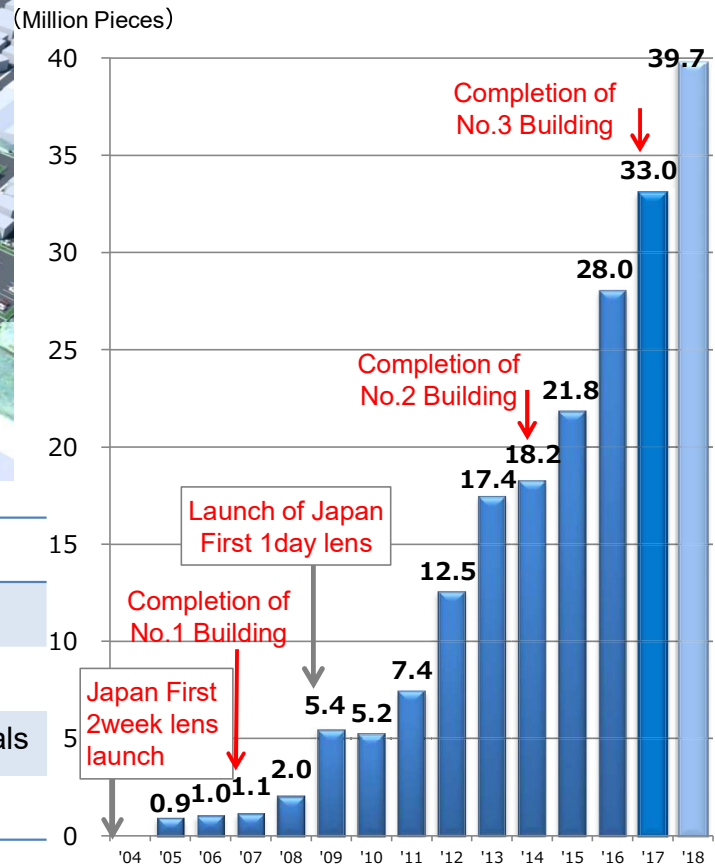
# Research & Manufacturing Facility

## Kounosu Research Institute

<Bird's-eye view of SEED Kounosu Research Institute>



### Monthly Production Capacity (1day & 2week)



Building	Space	Production Line	Types
No.1	14,200m <sup>2</sup>	High-mix	4,877
No.2	9,700m <sup>2</sup>	Very High-volume	62
No.3	12,500m <sup>2</sup>	High-volume	new materials
Research	3,640m <sup>2</sup>		



# Overseas Expansion

## Operating Business in 27 Countries and Areas



- |                |             |           |
|----------------|-------------|-----------|
| Subsidiaries   |             | Mongolia  |
| Germany        | Thailand    | India     |
| Singapore      | Vietnam     | Hong Kong |
| China          | Macao       | Indonesia |
| Taiwan         | Philippines | Lebanon   |
| Malaysia       |             |           |
| United Kingdom |             |           |
| Distributors   |             |           |
| Greenland      |             |           |
| Iceland        |             |           |
| Norway         |             |           |
| Sweden         |             |           |
| Finland        |             |           |
| Denmark        |             |           |
| Belgium        |             |           |
| Italy          |             |           |
| Netherlands    |             |           |
| Luxemburg      |             |           |
| Switzerland    |             |           |
| Portugal       |             |           |
| Planning       |             |           |
| France         | South Korea |           |
| Australia      | New Zealand |           |
| Monaco         | Greece      |           |
| Bulgaria       | Cyprus      |           |
| Russia         | Bangladesh  |           |